

## **SAT AI AutoIngest —**

*Ingesting SONY XDCAM clips and metadata to your Avid Unity*

SAT AI AutoIngest is a software application designed to transfer digital media with metadata, captured on SONY XDCAM devices to Avid Unity/ISIS.



Using NL Technology's SAT AI AutoIngest, users can move SONY MXF XDCAM media and its accompanying XML metadata from the XDCAM media to Unity or a local hard drive as Avid clips, without using an Avid editor.

The transfer of the digital media and metadata can be begin sooner and faster than ever before—even from a remote location. Begin sooner because there is no waiting for an edit suite and faster, because of our multi-tasking architecture, reads from the optical disc and transfers to Unity as simultaneous tasks. Once the transfer takes place the user can clear the media off the XDCAM device(s) thus allowing there reuse in the field or put it on the self as a source archive. SAT AI lets the user automatically transfer media as soon as the camera media is inserted and mounted by the ingest computer, without intervention. Users also have the ability to assign and customize metadata before or after transfer, clips can be tracked, sorted, and organized simultaneously during ingest.

AutoIngest creates Avid compliant MXF media, with all extraneous metadata encapsulated into a clip oriented workflow, for a simple and fast ingest to an Avid Unity workgroup environment. The software can also quickly assign useful clip names with the AutoIngest "Batch Edit" function or automatically use the photographer defined clip name (title1) entered in the XDCAM camera.

SAT AI provides the next level of flexibility, with the ability to store video assets to any catalog within the Avid Interplay or MediaManager environment. The Avid Web Services are used to perform the catalog check-in.

SAT AI AutoIngest allows for efficiencies at the editing station as well. Ingested digital media arrives with complete metadata, allowing assets to be searched and shared as soon as they arrive. Faster transfer to the editing station gives editors more time to work and collaborate among peers.

Use of SAT AI software maximizes the availability of expensive recording and

editing workstations and makes storage and transfer of digital media faster, better with no lost metadata, and less labor intensive by using the simple GUI.

During the clip-based transfer, SAT AI displays video clips with head frames and reads all metadata provided by the SONY camera, including all MXF and XML data, good shot markers, proxy video if present, as well as any customized metadata added using the easy to use graphical interface, such as meaningful clip names.

SAT AI fully supports the Sony / Avid proxy workflow, in that AutoIngest can transfer the Proxy clips to the Avid Unity environment and allow the user to edit and conform to the high resolution video later.

SAT AI supports creation of Avid Sequences and can check them into the Avid environment for enhanced video viewing on the Avid Editors. With Sony XDCAM, SAT AI can automatically ingest Proxy only, No Proxy or both Proxy and high resolution and automatically create a Sequences of all clips on the XDCAM Disc, with no human intervention.

Sony XDCAM metadata are mapped to some of the standard fields for use in the Avid bins. As an example the "title1" field in the XDCAM camera is appended to the conical name "C000x - <title 1 value>" for the clip name. This name is helpful in the Avid Editor for both descriptive and well as managing notes taken in the field when the only information available was the conical name C00xx.

## **Workflows:**

### **SAT AI Workgroup, & SAT AI StandAlone**

NL Technology has releasing SAT AI AutoIngest for Workgroup and StandAlone/field configurations. The Workgroup configuration requires the Avid TransferManager to perform workgroup to workgroup transfers to Unity, while the StandAlone configuration is used without the Avid components, and is use to prepare SAT AI Mobile devices for ingest at a SAT AI Workgroup station.



The SAT AI Workgroup configuration will perform all of the functions of the mentioned above. In addition, SAT AI Workgroup transfers clips to an Avid Unity workspace using the Avid TransferManager to either Avid MediaManger or Interplay environments.

The SAT AI Workgroup software can be setup to automatically transfer from an "SAT AI Mobile" device, prepared by SAT AI StandAlone to the Unity workspace

immediately, or work in an interactive mode allowing for user selections and metadata changes.

Because the media is transferred with all its metadata, editors are able to work with the data as soon as it is ingested, allowing immediate collaboration and enhanced creativity.

### SAT AI AutoIngest Workflow with a SONY XDCAM Device



It could not be simpler

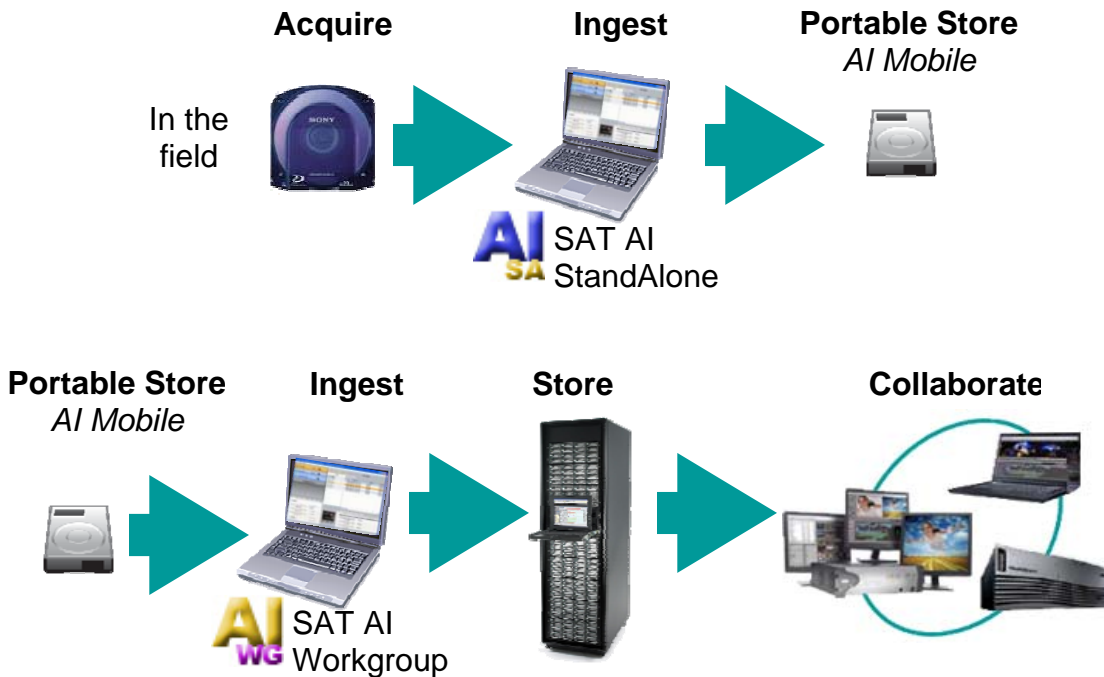
- Acquire the footage using a SONY camera on the XDCAM Disc
- SAT AI to ingest the XDCAM media and metadata and creates Avid Clips in one task and saves a copy to a hard drive
- SAT AI Stores the Avid Clips with full metadata to Unity using AI's integrated Avid TransferManager interface, as concurrent second task
- Use the advanced Avid Interplay/MediaManager environment to collaborate and distribute the final production



The StandAlone configuration is used by the videographer in the field. Once the digital media is captured on the SONY XDCAM disc the videographer uses SAT AI StandAlone to move the XDCAM media from the SONY U1 Disc Drive Unit and all XML metadata to a local windows folder. The folder can be any regular folder or on a fast portable storage device such as a USB or 1394 drive. This folder on the portable storage, can be used as an "SAT AI Mobile" ingest device to the SAT AI Workgroup system. The digital media with all its metadata are prepared for express ingest to the Avid Unity environment in a one step process. In the Sony workflow this offloading of the video in the field

decreases the log jam of XDCAM disc ingest time in the facility because the read speed from hard drive are much faster than the optical media, there is no conversion to Op-Atom and you don't have to tie up an expensive deck. The Sony XDCAM Disc is then sent to the archive for safe keeping.

An example field use might be:




SAT AI StandAlone configuration can not transfer media to an Avid Workgroup; transfer to an Avid Unity workspace requires the SAT AI AutoIngest Workgroup configuration and SAT Transfer License dongle.

## SAT AI User Interface

The SAT AI User Interface has four areas:

- Device List Area: identify media storage/adaptor devices
- Device Details Area: media device setup, configuration and status
- Clip List Area: view and edit Clip Metadata
- Clip Detail Area: view Clip properties from Clip List area and view thumbnail of the clip (if one exists)

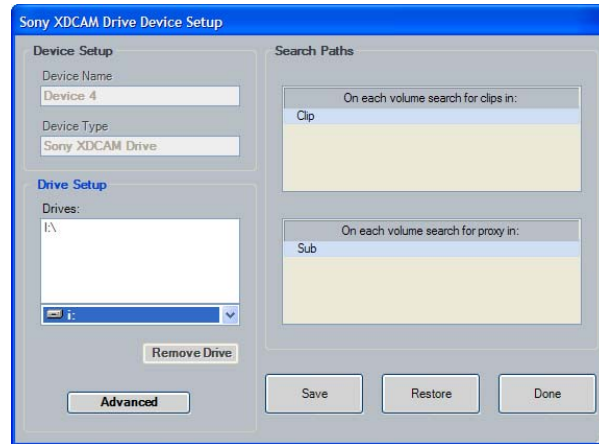


The screenshot displays the SAT AI AutoIngest application window. On the left, the 'Device List' area shows a tree view of storage devices including 'P2 Drive news', 'P2 Store news', 'P2 Cardbus news', 'P2 Camera news', and 'Local Storage news'. Below this is the 'Device Details' area for the selected 'P2 Drive', showing progress bars for 'Store 0%', 'Transfer 0%', and 'Archive 0%', along with checkboxes for 'Automatically Store', 'Transfer', and 'Archive', and options for 'Proxy First' and 'Proxy Only'. The main 'Clip List' area features a table with columns for 'Clip Name', 'Status', 'Creation Date', and 'Duration'. The table lists six clips named 'Alvirne 001' through 'Alvirne 006', all with a status of 'Ready'. The 'Clip Detail' area at the bottom right shows a metadata table for the selected clip 'Alvirne 001', including fields like 'Clip Name', 'Global Clip ID', 'Aspect Ratio', 'End Date', 'Start Date', 'Model Name', 'Serial No.', 'Manufacturer', 'Modified Date', 'Creation Date', 'Data Source', 'Aspect Ratio', 'Codec', 'Mark In', and 'Mark Out'. A small video thumbnail is visible to the left of the metadata table.

Name	Value
Clip Name	Alvirne 001
[New Attribute]	
Global Clip ID	060A2B340101010501010...
Aspect Ratio	16:9
End Date	09/19/2007 23:13:34
Start Date	09/19/2007 23:13:24
Model Name	AJ-SPX800P
Serial No.	C5TKC0424
Manufacturer	Panasonic
Modified Date	09/19/2007 23:13:35
Creation Date	09/19/2007 23:13:24
Data Source	SHOOTING
Aspect Ratio	16:9
Codec	DV25_411
Mark In	08:09:22:04
Mark Out	08:09:31:16

## The SONY XDCAM Professional Disc Drive Device Setup

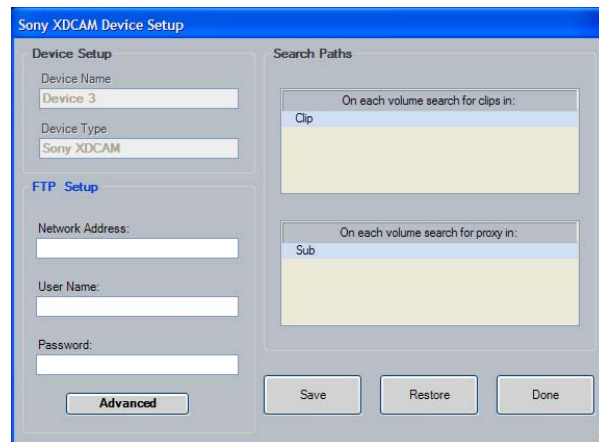
This is an example of the Device Setup Dialog Box is to work with a XDCAM USB Disc Drive Unit for devices which use drive letters for physical units.



Add the drive letters to the Drives list by choosing them (one at a time) in the drop down menu list under the **Drive Setup** list.

## The SONY XDCAM Professional Deck Device Setup

When using a Sony XDCAM Deck as a network device [FTP device], you must specify the network address, the User Name and the Password for the device.



### SONY Supported Equipment

SONY XDCAM Cameras and Decks in FTP mode, via Ethernet connection  
PDW-F330 / F350  
PDW-F30, PDW-F70/F7, PDW-1500 with the Network board  
SONY XDCAM PDW-U1 USB Professional Disc Drive Unit

**SAT AI creates media compatible with the following applications:**

Avid Interplay™  
Avid MediaManager™  
Avid Nearchive™  
Avid Unity™  
Avid ISIS™  
Avid Editors that support MXF media files  
MediaComposer®  
NewsCutter®  
Symphony Nitris®

**SAT AI AutoIngest Software**

Use of SAT AI Workgroup requires the following:

- SAT Transfer License dongle
- Avid Software installation kit for TransferManager™ (Client and Sever)
- A Working Avid TransferManager™ Server for Workgroup 4 or 5
- Avid Workgroup 4 - Transfer Manager 2.9.17 or greater  
or
- Avid Workgroup 5 - Interplay 1.1 or greater
- Avid Web Services for head frame and category check-in (InterPlay only)

**Minimum Recommended System Requirements**

Windows XP, SXDCAM  
CPU 2 GHz or greater 1 GB Ram  
25GB of free space (this is site dependant – possibly 250GB to 2TB or more)  
Recommended Screen Resolution 1024x768 or larger  
For USB ingest devices: available USB 2.0 port  
Ethernet connectivity to the Avid TransferManager Server  
(100Mbps minimum, 1 Gbps preferred)

To download a 21 day-trial version of SAT AI AutoIngest software, go to [www.nltek.com](http://www.nltek.com). The 21 days will start when you install the software.

For more information email: [info@nltek.com](mailto:info@nltek.com)

For support email: [support@nltek.com](mailto:support@nltek.com)